

SLG 419AR

Circular connectors "SHOW-BIZ"



CHARACTERISTICS

- 2x6 contacts are used to provide power and 7 socket first mate last break earth contacts have a grounding function.
- In this way, each equipment has its own ground.
- The 7 grounding contacts are identified from the others by their plating, in order to improve the cabling process and also to allow a quick visual differentiation between standard SL419AR and SLG419AR connectors.
- As for SL Series, all sockets are protected by a closed entry to warranty an outstanding safety in use.
- Available in female receptacle and in line female receptacle.



Female receptacle SLG EF 419 AR



Female in line receptacle SLG FFDR 419 AR

DESCRIPTION

SLG419AR connector, derived from the SL series, has been developed to meet the new requirements of the industrial market as far as safety of the user and of the equipment are concerned. SLG419AR connectors provides 19 solder termination contacts (size 12) which accept each 25 A.

SLG419AR is different from the standard version by its 7 sockets which are located in the centre of the insert to ensure the «first mate last break» fonction.

*7 first mate
last break
earth contacts*

APPLICATIONS

- Power supplies of 6 brand-lights for entertainment applications.
- Power supplies with independent grounding.

SLG 419AR



Amphenol

Mechanical characteristics

- Aluminium alloy molded shells
- Mating by screwing system
- Alkydes inserts
- Gold plated copper alloy machined contacts (gold plated on nickel underplate for power contacts, electrolytic nickel plated for grounded contacts)
- Closed entry female contacts
- Reinforced mating screw
- Temperature range : -40°C to 85°C

Electrical characteristics

- Contact gauge AWG : 12
- Nominal current: 25 A
- Contact resistance < 0.002 Ohm
- Solder pot internal diameter: 2.5 mm

Contact arrangement electrical characteristics

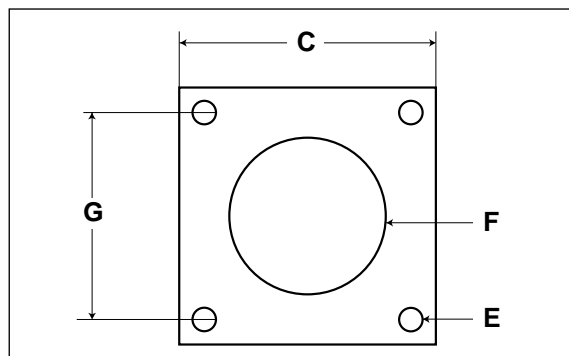
- Test voltage at sea level: 1750 Vrms
- Working voltage in accordance with NF C 20-040, environmental conditions II : 400 Vrms
- Conform to new USITT's specifications (American governmental agency)

Accessories

Please consult the standard SL data-sheet.

Dimensional characteristics

Panel drilling for square flange receptacle

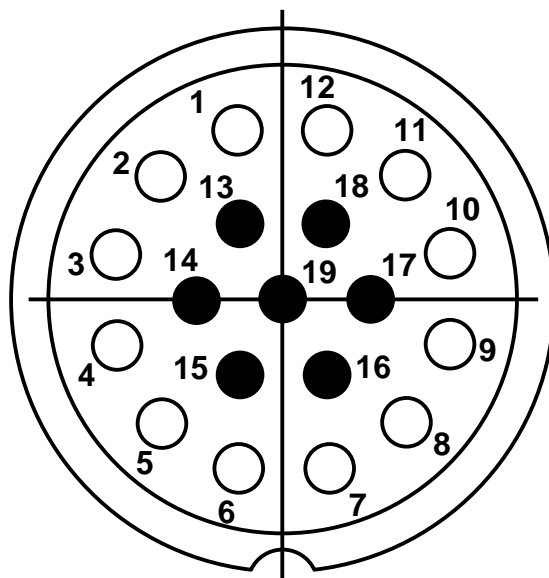


Receptacle size	C mm	Diam. E mm	Diam. F mm	G mm
40	56	3.5	47	41

Please see the standard SL data-sheet for other dimensions (E101).

Insert arrangement

Mating face view of the female insert



- First mate last break contact

In-line receptacle or plug body

SL series	SL	G	-	B	F	-	419AR
G: 7 first mate last break earth contacts (for 419AR only)							
Shell finish: None: standard white cadmium plated AS: black conductive D: black non-conductive							
Shell: B: mobile plug or in-line receptacle							
Contacts: F: socket							
Shell style: None: mobile plug R: in-line receptacle							
Contact arrangement: 419AR							

(Please consult us for mobile plug or in-line receptacle which allows one-part black conductive backshell to screw on mobile plug or receptacle and cable seal PG type).

Square flange receptacle or square flange receptacle with mating screw

SL series	SL	G	-	F	M	-	419AR
7 first mate last break earth contacts (for 419AR only)							
Shell finish: None: standard white cadmium plated AS: black conductive D: black non-conductive							
Shell: E: receptacle							
Contacts: F: socket							
Shell style: None: square flange receptacle E: square flange receptacle with mating screw							
Contact arrangement: 419AR							

Right angle or straight backshells

Connector size	Backshell with cable-clamp P/N			
	straight		right angle	
	black (non conductive)	green cadmium (conductive)	black (non conductive)	green cadmium (conductive)
40	47380N	21461N	47384N	21465N

- Green backshell (conductive finish) are equipped with conductive clamping pads.

Do not hesitate to contact us for further information



Amphenol

Amphenol Socapex

Mil/Aero & Industrial Business Unit

948, Promenade de l'Arve - BP 29

F - 74311 Thyez Cedex

Tel.: +33 (0) 4 50 89 28 00 - Fax: +33 (0) 4 50 96 19 41

<http://www.amphenol.com>

Sales office

Tel.: +33 (0) 1 49 05 30 00 - Fax: +33 (0) 1 49 05 30 43